

Landscape Workshop

Supply list (revised 1/24/16)

Instructor: Helene Knott 503 631-8806 kittystomp@comcast.net

Combining fabric colors and textures effectively is the backbone of creating striking landscape quilts. This class will teach you how to work with fabrics to craft landscapes in all ranges of seasonal effects and exposures from dawn to twilight.

There are five projects to choose from, three in a rectangular format and two scenic circles. The projects are fused for ease and speed but can be hand appliquéd by those preferring that technique. NOTE: tools and materials for hand appliqué vary by method, if you wish to hand appliqué; bring the supplies appropriate for your choice of technique. NOTE: If you have taken the Confetti class the preceding day and wish to add this technique to your landscape project, you will need additional supplies and materials; contact instructor for details.

Please be courteous to others by arriving for class with the correct supplies. Contact me at 503 631-8806 or kittystomp@comcast.net if you have any questions.

MATERIALS/TOOLS:

Pattern: There are three Bella Vista Landscapes to choose from – Desert Mesa, Serene Marsh and Rocky Coast; or you can choose one of two Postcards From Japan patterns – Windswept Tree or Orchard Temple. Pictures of the selections are shown at the end of the supply list along with the fabric legends from each.

Fabrics: The required fabric amounts are listed below. Fat-quarters will be sufficient for all of the design components or you can follow the specific measurements on the fabric legend for the pattern of your choice (those choosing the Postcards From Japan patterns will work on the centers only in class). In general, you will need fabrics for sky, water, rocks, trees, buildings, etc. For suggestions on the types of fabrics you might use, go to www.heleneknott.com and look for my free downloadable fabric selection guide in ‘Workshops & Classes’, you may want to bring a variety of choices for each component to allow you to fine tune your choices, remember to bring the amount of muslin specified for each pattern. For those timid about fabric selection, there will be time spent in class covering appropriate fabrics. NOTE: If you intend to fuse, pre-wash all your fabrics and do not starch them! Adhesive web does not stick well to sizing.

Scissors: You **must** have a pair of fine-jawed embroidery scissors for cutting out the intricate pieces. Large sewing shears will not give you the control or accuracy you need.

Sewing pins: Small ones will be better than long ones.

Sewing machine: Will be used to finish the edges of the appliquéd circle or add borders to the Bella Vista landscapes.

Fusible web: Choose a paper backed fusible web such as Soft Fuse, Heat & Bond Lite or Wonder-Under.

Teflon pressing sheet: recommended to protect iron and board from adhesive.

Portable light box/table

Pencil with a good eraser: to trace pattern onto fusible web.

Kits: There will be an optional kit available for the smaller versions of the Bella Vista Rocky Coast and Serene Marsh patterns. The kits must be pre-ordered for a fee of \$10 and includes the landscape fabrics, muslin base and fusible web. Each kit is unique and will vary somewhat from the samples shown below. Kits will be delivered in class to allow students to select exactly which fabric variations they prefer.

Fabric Legends: Fabric measurements given in the legends are width x height to allow for proper orientation of directional prints. NOTE: you may need additional fabric for fussy cutting.

TIP - For best results, look for fabrics that effectively emulate natural textures such as water, foliage, sky, etc. Study nature photos for color and texture inspirations

Landscape Workshop

Supply list (revised 1/24/16)

Instructor: Helene Knott 503 631-8806 kittystomp@comcast.net

Bella Vista ~ Rocky Coast

The coastline of the Pacific Northwest and parts of California are dramatic. Steep cliffs rise sharply from the sea, sometimes craggy, sometimes cloaked in trees. A testament to the forces of nature that sculpted the shore.

Center Panel	7" x 10"	10" x 14"
Muslin	8" x 11"	11" x 15"
Sky	9" x 5"	12" x 7"
Cliff A	7" x 4"	9" x 6"
Water A	7" x 4"	9" x 5"
Cliff B	8" x 6"	10" x 8"
Water B	6" x 5"	8" x 6"
Cliff C	7" square	9" square
Rock	2" square	3" square
Water C (or sand)	6" x 4"	8" X 4"
Trees	8" square	10" square
Inner Border	1/8 yard	1/8 yard
Outer Border	1/8 yard	1/4 yard



Kits for the 10" x 7" size scenic panels are available!

Landscape Workshop

Supply list (revised 1/24/16)

Instructor: Helene Knott 503 631-8806 kittystomp@comcast.net

Bella Vista ~ Serene Marsh

In his writing, Henry David Thoreau spoke of the peace and serenity of ponds. These quiet expanses of water and plants inspire a meditative mood as one slows to listen to frog song and perhaps watch a water bird drifting in gentle solitude.

Center Panel	10" x 7"	14" x 10"
Muslin	11" x 8"	15" x 11"
Sky	12" x 4"	16" x 5"
Trees	12" x 4"	16" x 4"
Water A	6" x 2 ½"	8" x 2 ½"
Reeds A	8" x 3"	10 ½" x 3"
Water B	9" x 3"	12" x 4"
Reeds B	5" x 3 ½"	6" x 4"
Water C	8" x 4 ½"	10 ½" x 5 ½"
Reeds C	6 ½" x 5"	8 ½" x 6 ½"
Inner Border	⅛ yard	⅛ yard
Outer Border	⅛ yard	¼ yard



Kits for the 10" x 7" size scenic panels are available!

Landscape Workshop

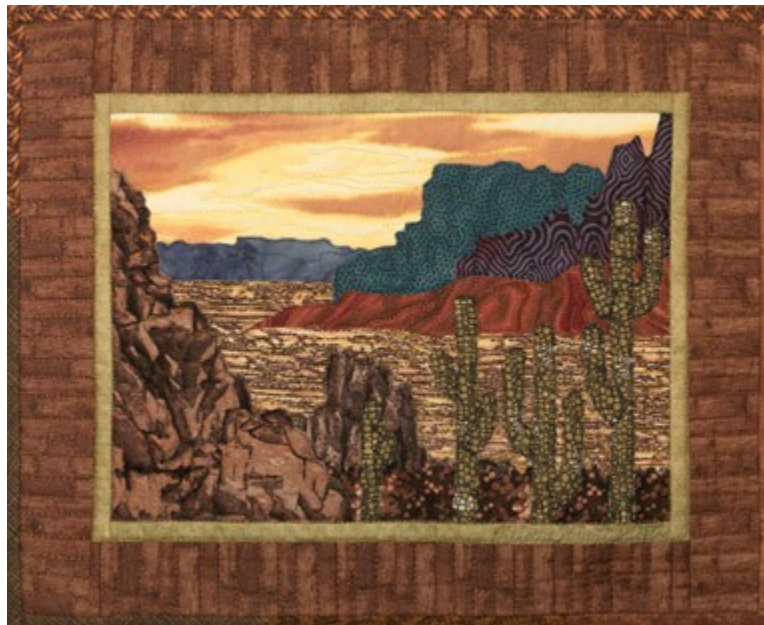
Supply list (revised 1/24/16)

Instructor: Helene Knott 503 631-8806 kittystomp@comcast.net

Bella Vista ~ Desert Mesa

The desert is a dichotomy of colors and textures. The serene landscape can be monochromatic and dusty or awash with color from light or variety of rocks. This complexity was an inspiration for American artist, Georgia O'Keefe

Center Panel	10" x 7"	14" x 10"
Muslin	11" x 8"	15" x 11"
Sky	12" x 4 1/2"	16" x 5 1/2"
Distant Hills	6 1/2" x 3"	8" x 3"
Desert Plain	12" x 5 1/2"	15" x 7"
Rocks A	7" x 4 1/2"	9" x 5 1/2"
Rocks B	6" x 5"	7 1/2" x 6"
Rocks C	9 1/2" x 3 1/2"	12 1/2" x 4"
Rocks D	6" x 4 1/2"	8" x 5 1/2"
Brush	8 1/2" x 3"	11" x 3 1/2"
Rocks E	6" x 8"	8" x 10 1/2"
Cactus	8" square	11" square
Inner Border	1/8 yard	1/8 yard
Outer Border	1/8 yard	1/4 yard



Landscape Workshop

Supply list (revised 1/24/16)

Instructor: Helene Knott 503 631-8806 kittystomp@comcast.net

Postcards From Japan ~ Windswept Tree

Inspired by the prints of Japanese artist Ando Hiroshige this rugged vista with an enduring tree would be at home in California as well as the coast of Japan. The class will focus on the scenic circle only; there is no need to bring background fabrics.

Center Panel	16" Circle
Muslin	18" square
Sky	18" x 9"
Water	18" x 12"
Background Mountains	20" x 5"
Land in Foreground	13 1/2" x 10"
Tree Trunks	8" x 12"
Tree Foliage*	8" x 12"
Foreground Bushes*	8" x 10"
Moon (optional for night scene)	3" square

*Note: These two elements are very effective when created with the confetti technique if you are familiar with it. If you choose to do so, 8" squares of batiks in 2-3 appropriate colors instead of the tree and bush fabrics are adequate.



Sample shown has been rendered with confetti

Landscape Workshop

Supply list (revised 1/24/16)

Instructor: Helene Knott 503 631-8806 kittystomp@comcast.net

Postcards From Japan ~ Orchard Temple

Inspired by the prints of Japanese artist Ando Hiroshige This temple may be nestled in a grove of maples in place of the blossoming trees. Leave off the Japanese lanterns and the temple transforms into a rustic mountain cabin. The class will focus on the scenic circle only; there is no need to bring background fabrics.

Center Panel	16" Circle
Muslin	18" square
Sky	18" square
Mountain	8" x 7"
Trees A1 & A2 (2 medium textures)*	20" x 11" each
Tree B (fine texture)*	4" x 5"
Tree Trunks	13" x 6"
Foundation Wall	6" x 4"
Posts & Railing	11" x 3"
Temple Wall	6" x 5"
Window	5" x 3"
Lanterns	6" x 3"
Roof	10" x 5"
Roof Trim	10" x 2"
Moon (optional for night scene)	3" square

*Note: These two elements are very effective when created with the confetti technique if you are familiar with it. If you choose to do so, 8" squares of batiks in 2-3 appropriate colors instead of the tree fabrics are adequate.

